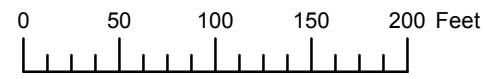


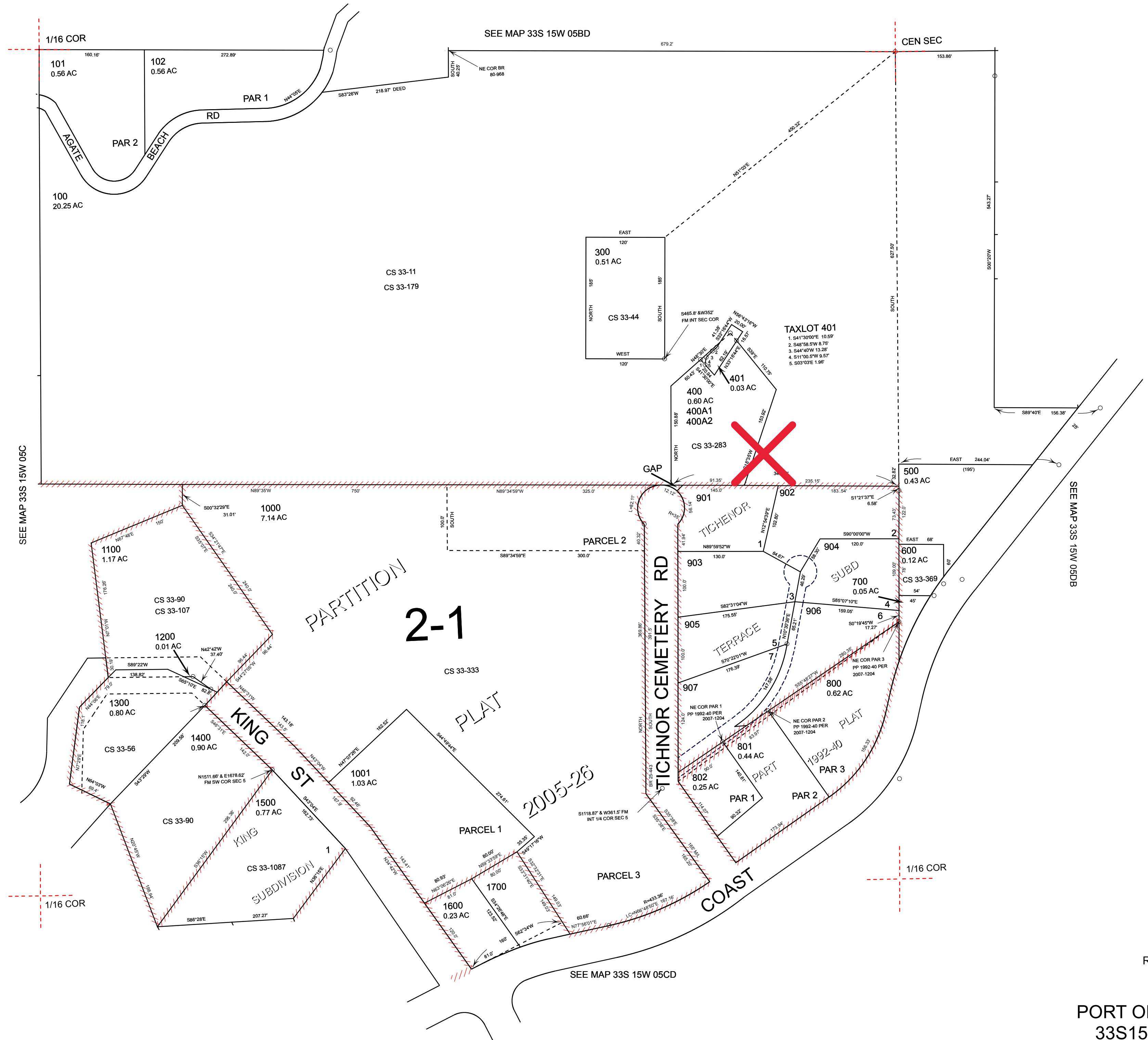
THIS MAP WAS PREPARED FOR ASSESSMENT PURPOSE ONLY



N.E. 1/4 S.W. 1/4 SEC. 5 T. 33S. R. 15W. W.M. CURRY COUNTY  
1" = 100'

33S15W05CA  
PORT ORFORD

Cancelled  
200  
900  
1002  
1800



2005-26

Revised: RAA  
12/29/2015

PORT ORFORD  
33S15W05CA